

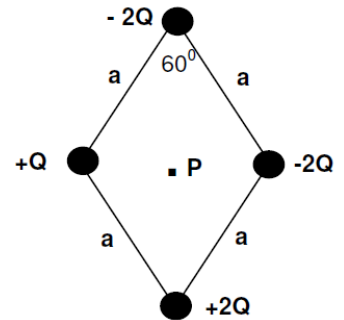
## Practice Problems, Physics 121, Common Exam 2, Spring 2023

### Chapters: 23, 24, 25, 26

1.

Four point charges are located at the corners of a diamond-shaped parallelogram as shown in the sketch. The value of  $Q = 20 \mu\text{C}$ . The length of each side of the figure is  $a = 30 \text{ cm}$ , with an  $60^\circ$  angle located as shown. The potential at infinity is the zero reference level. Find an expression for the electric potential  $V$  at point  $P$ , the center of the diamond shape. Note:  $k_e$  is the constant  $1 / 4\pi\epsilon_0$ .

- A)  $V = 0$
- B)  $V = 2k_eQ / a.\text{sqrt}(3)$
- C)  $V = -4k_eQ / a$
- D)  $V = -k_eQ / a.\text{sqrt}(3)$
- E)  $V = -2k_eQ / a$



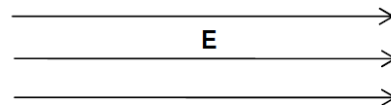
2.

A metal sphere is charged to a potential of 300 volts. Its radius is 2 meters. The potential at a point 1 meter from the center of the sphere is:

- A) 300 V.
- B) -100 V.
- C) -300 V.
- D) 0 V.
- E) 100 V.

3.

An electron is moved through a displacement  $\Delta x$  parallel to the direction of a uniform electric field. During this displacement:

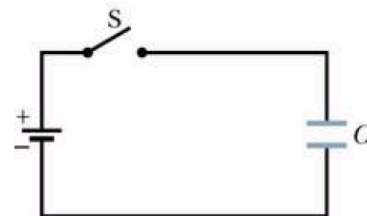


- A) the potential energy of the electron and the electric potential do not change.
- B) the potential energy of the electron increases, the electric potential increases.
- C) the potential energy of the electron increases, the electric potential decreases.
- D) the potential energy of the electron decreases, the electric potential decreases.
- E) the potential energy of the electron decreases, the electric potential increases

4.

The capacitor in the sketch has a capacitance of  $24.0 \mu\text{F}$  and is initially uncharged. The battery maintains a potential difference of  $3.0 \text{ V}$ . How much total charge flows out of the battery until the capacitor is fully charged (the current stops flowing)?

- A)  $3.20 \mu\text{C}$
- B)  $8.00 \mu\text{C}$
- C)  $72.0 \mu\text{C}$
- D)  $12,000 \mu\text{C}$
- E)  $30.0 \mu\text{C}$



5.

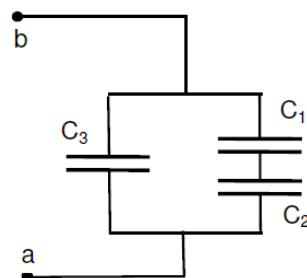
A parallel plate capacitor being designed is supposed to have a capacitance of  $400 \text{ pF}$  ( $1 \text{ pF} = 10^{-12} \text{ F} = 10^{-6} \mu\text{F}$ ). It will be filled with a material whose dielectric constant is close to  $1.5$  (glass). The distance between plates will be  $0.3 \text{ mm}$ . Approximately, what should the area of the plates be?

- A)  $1.10 \text{ m}^2$
- B)  $0.028 \text{ m}^2$
- C)  $0.014 \text{ m}^2$
- D)  $0.009 \text{ m}^2$
- E)  $0.9 \text{ m}^2$

6.

Three capacitors are connected in the series/parallel arrangement shown in the sketch. Suppose  $C_1 = 30 \mu\text{F}$ ,  $C_2 = 30 \mu\text{F}$ , and  $C_3 = 15 \mu\text{F}$ . The potential difference across the combination  $V_{ab} = 40 \text{ V}$ . The equivalent capacitance between points a and b is closest to:

- A)  $15 \mu\text{F}$
- B)  $30 \mu\text{F}$
- C)  $7.5 \mu\text{F}$
- D)  $45 \mu\text{F}$
- E)  $12 \mu\text{F}$



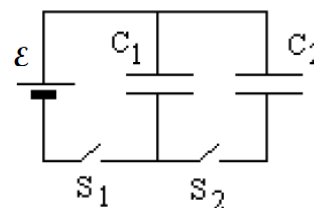
7.

In problem 6, calculate the voltage across capacitor  $C_2$  (in volts)

- A) 60
- B) 40
- C) 10
- D) 20
- E)  $6 \times 10^{-4}$

8.

In the circuit shown in the sketch, switches  $S_1$  and  $S_2$  are initially open. Capacitor  $C_1 = 30.0 \text{ nF}$  is then charged by closing switch  $S_1$  which connects it to the battery whose EMF  $\mathcal{E} = 90 \text{ V}$ . Switch  $S_1$  is then opened, thereby disconnecting  $C_1$  from the battery. Switch  $S_2$  is then closed, thereby connecting the charged capacitor  $C_1$  to the uncharged  $15.0 \text{ nF}$  capacitor  $C_2$ . Find the final potential difference across capacitors  $C_1$  and  $C_2$ . (Hint: after being disconnected, the total charge on the combination  $C_1, C_2$  remains constant).



- A. 60 V
- B. 30 V
- C. 4 V
- D. 10 V
- E. 120 V

9.

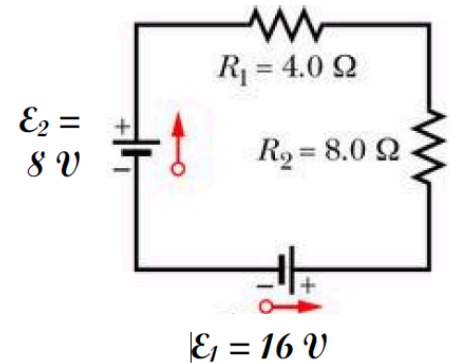
For the previous problem, the final charge on capacitor  $C_1$  is closest to:

- A)  $2.0 \mu\text{C}$
- B)  $0.8 \text{ nC}$
- C)  $0.2 \mu\text{C}$
- D)  $1.2 \text{ nC}$
- E)  $1.8 \mu\text{C}$

10.

Assume that the batteries in the figure have negligible internal resistance. Assume that the current flows counterclockwise. Find the magnitude of the current in the circuit and the power dissipated in resistor  $R_1$ .

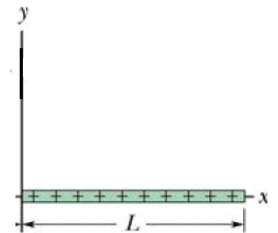
- A)  $i = 0.67 \text{ A}$ ,  $P_1 = 2.7 \text{ watts}$
- B)  $i = 1.33 \text{ A}$ ,  $P_1 = 5.4 \text{ watts}$
- C)  $i = 1.5 \text{ A}$ ,  $P_1 = 24 \text{ watts}$
- D)  $i = 0.67 \text{ A}$ ,  $P_1 = 1.8 \text{ watts}$
- E)  $i = 1.5 \text{ A}$ ,  $P_1 = 9 \text{ watts}$



11.

The figure shows a plastic rod of length  $L = 2.5 \text{ m}$ , with a non-uniform linear charge density  $\lambda = \alpha x$  with  $\alpha = 10^{-3} \text{ C/m}^2$ . The rod is lying on the  $x$  axis. Assuming  $V = 0$  at infinity, find the electric potential (in volts) at the left end of the rod – in other words, at the origin. Select the closest answer.

- A) Zero
- B)  $2.7 \times 10^{10} \text{ volts}$
- C)  $2.25 \times 10^7 \text{ volts}$
- D)  $1.35 \times 10^8 \text{ volts}$
- E) Infinity

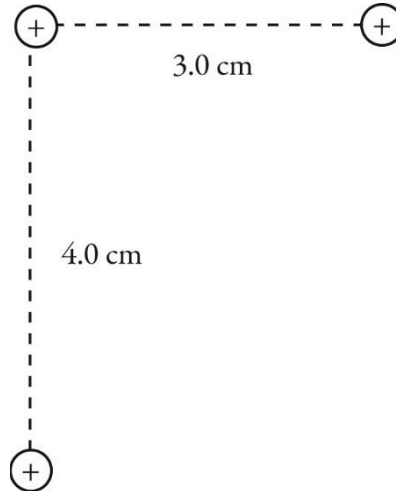


12.

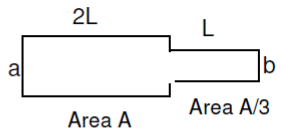
Potential energy of point-charges: Consider the group of three  $+2.4 \text{ nC}$  point charges shown in the figure. What is the electric potential energy of this system of charges relative to infinity?

( $k = 1/4\pi\epsilon_0 = 8.99 \times 10^9 \text{ N} \cdot \text{m}^2/\text{C}^2$ )

- A)  $4.1 \times 10^{-6} \text{ J}$
- B)  $4.6 \times 10^{-6} \text{ J}$
- C)  $4.2 \times 10^{-6} \text{ J}$
- D)  $4.4 \times 10^{-6} \text{ J}$



13. Two wires made of the same material are joined end-to-end and a potential difference is maintained across the combination, from a to b in the sketch. The thin wire has cross sectional area  $A/3$  and length  $L$ . The fatter wire has area  $A$  and length  $2L$ . Which of the following quantities are the same for both wires:



1. The resistivity of each wire
2. The resistance of each wire
3. The current density inside each wire
4. The current through each wire
5. The potential difference across each wire

- A) 1, 2, and 3
- B) 1, 2, 4, and 5
- C) 1 only
- D) 2 only
- E) 1 and 4 only

14.

A certain electric furnace consumes  $24 \text{ kW}$  when it is connected to a  $240\text{-V}$  line. What is the resistance of the furnace?

- A)  $1.0 \text{ k}\Omega$
- B)  $10 \Omega$
- C)  $2.4 \Omega$
- D)  $0.42 \Omega$
- E)  $100 \Omega$

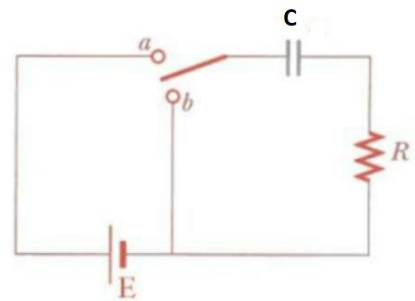
15.

A 1500-W heater is connected to a 120-V line. How much heat energy does it produce in 2.0 hours?

- A) 1.5 kJ
- B) 3.0 kJ
- C) 0.18 MJ
- D) 11 MJ
- E) 18 MJ

16.

The sketch at right shows a series RC circuit. The applied EMF  $E = 12\text{ V}$ ,  $R = 1.0\text{ M}\Omega$ , and  $C = 5.0\text{ }\mu\text{F}$ . The capacitor is initially uncharged. After the switch is closed at point "a", how long does it take for the charging current through the resistor to fall to 30% of its initial value? Select the closest answer:



- A) 6.0 sec
- B) 80 sec
- C) 0.3 sec
- D) 3.0 sec
- E) 1.2 sec

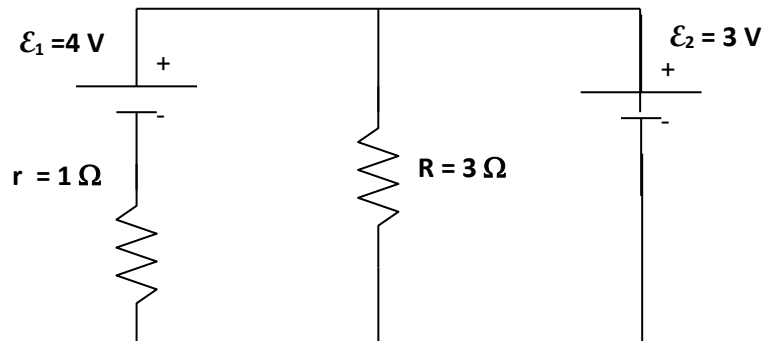
17.

The capacitor in a single-loop  $RC$  circuit is discharged to 25% of its initial potential difference in 60 s. What is the time constant for this circuit?

- A) 0.5 s
- B) 60 s
- C) 23.0 s
- D) 0.043 s
- E) 43.3 s

18.

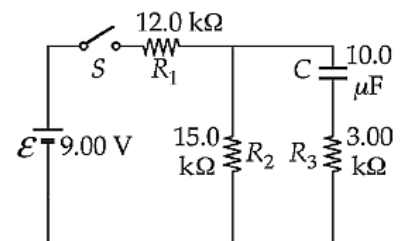
The figure at right shows an ideal battery with  $\mathcal{E}_2 = 3 \text{ V}$ , and a real battery  $\mathcal{E}_1 = 4 \text{ V}$  whose internal resistance  $r = 1 \Omega$ . Both EMF's are connected to a  $3 \Omega$  resistor. What is the current through the  $1 \Omega$  resistor?



- A) 1.33 A
- B) 1.25 A
- C) 1.0 A
- D) 2.0 A
- E) 3.0 A

19.

Suppose the switch has been closed for a time interval sufficiently long for the capacitor to become fully charged. Find the charge on the capacitor.



- A) 0.045C
- B) 0.75 mC
- C)  $12 \times 10^{-6} \text{ C}$
- D) 2.0 C
- E) 50  $\mu\text{C}$

20.

Potential energy of point-charges: An electron is released from rest at a distance of 9.00 cm from a proton. If the proton is held in place, how fast will the electron be moving when it is 3.00 cm from the proton? ( $m_e = 9.11 \times 10^{-31}$  kg,  $e = 1.60 \times 10^{-19}$  C,  $k = 1/4\pi\epsilon_0 = 8.99 \times 10^9$  N · m<sup>2</sup>/C<sup>2</sup>)

- A) 75.0 m/s
- B) 106 m/s
- C) 130 m/s
- D)  $1.06 \times 10^3$  m/s
- E)  $4.64 \times 10^5$  m/s

**ANSWER KEY:**

- 1. E
- 2. A
- 3. C
- 4. C
- 5. D
- 6. B
- 7. D
- 8. A
- 9. E
- 10. D
- 11. C
- 12. A
- 13. E
- 14. C
- 15. D
- 16. A
- 17. E
- 18. C
- 19. E
- 20. B